

# States of Guernsey Prison

//

## Appointment of Chaplain

//



Guernsey Prison is the responsibility of the Committee *for* Home Affairs of the States of Guernsey.

There are clear objectives for the operation of the Prison, in keeping with the stated vision and mission:

**Vision** We ensure public protection and commit to reduce re-offending.

**Mission** We provide a safe and secure environment that enables prisoners to address the causes of offending behaviour and provide them with values, skills and experience to take a positive role in the community upon release.

The Prison Governor, Mr John de Carteret, is responsible for the prison and all prisoners. As it is the only prison on the Island, the facility must be equipped to hold remand and sentenced prisoners, males, females, young offenders, children and vulnerable prisoners with varying security categories, offences, and sentence lengths. The prison has accommodation to house a maximum of 134 prisoners.

### § Introduction to Guernsey Prison

Guernsey Prison aims to deliver ‘a value-based service which centres on positive outcomes for the prison community’.

The core values are

- Integrity
- Safety
- Potential
- Inclusion
- Collaboration

We identify 'Strategic Pathways' in partnership with other departments and voluntary agencies. The needs of individual offenders in relation to each pathway will be identified through the assessment and sentence planning process and managed by the Offender Manager and Offender Management team.

Many offenders will have complex needs, requiring multiple interventions. Identifying the offenders at most risk of reoffending and focusing resources on those offenders is a key component of the offender management model. In summary, every offender is assessed, and clear goals set for reducing risk of reoffending. Public protection procedures are a key element

in offender management. Multi Agency Public Protection Arrangements involve a range of Government and voluntary agencies to manage the most difficult and dangerous offenders.

The Strategic Pathways key to reducing reoffending are:

- Accommodation and Support
- Employment, Education, and Training
- Drugs and Alcohol
- Family and Social Support
- Life Skills and Offending Behaviour
- Health
- Financial Management

Guernsey Prison is committed to becoming a trauma informed establishment by upskilling the care givers, changing the way in which we view prisoner care and promoting core values in our staff team.

Opened on its present site in 1989, the prison is situated towards the north of the Island, in the parish of St Sampson.



## § The Prison Chaplain

The role of the Chaplain is to provide a coordinating Chaplaincy role within Guernsey Prison, ensuring that worship services are coordinated, to ensure all prisoners can practice their faith and to provide a pastoral role to prisoners and prison staff.

The Prison Chaplain will be expected to work at all times towards the vision and mission of Guernsey Prison.

## § The Prison Chaplaincy

The work of the Prison Chaplaincy is outlined on the prison website:

- The Prison Chaplaincy provides for the spiritual care of prisoners and staff of all religions; anyone who needs support, spiritual help or guidance has access to the Chaplaincy.

- The Chaplaincy is there to support people whether they are religious or not.
- As part of the prison's induction, every prisoner will be invited to meet with the Chaplain:
  - To introduce themselves and the Chaplaincy Team
  - For the team to offer reassurance and support
  - To ensure that the person's religion is recorded correctly
  - To explain what religious services and facilities are available

### **Care and support**

- The Chaplaincy is here to support and to listen whether someone is religious or not. We are here to offer a listening ear.

### **One to one meetings**

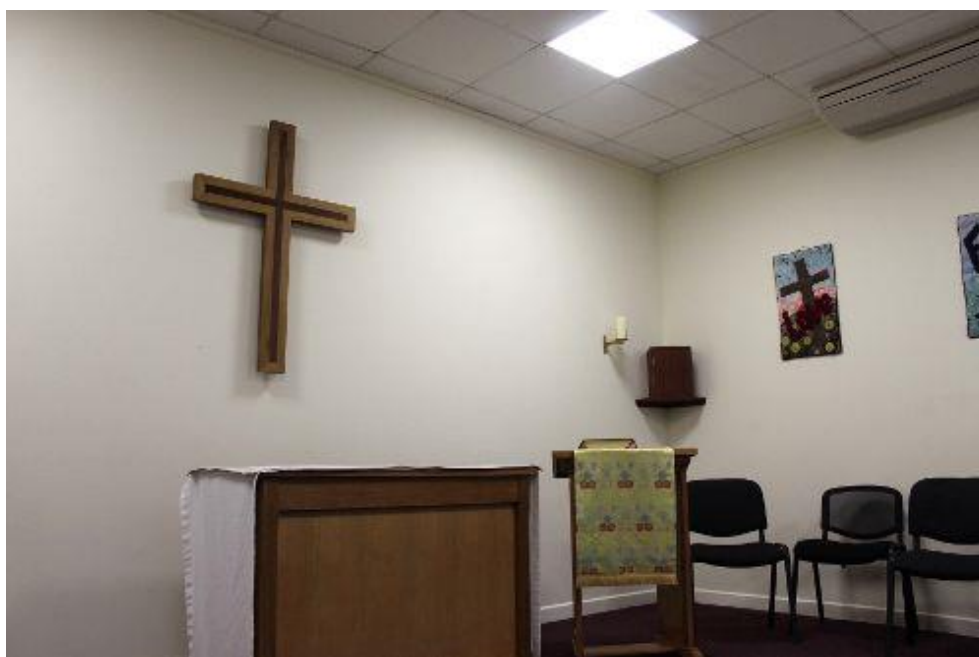
- Prisoners are welcome to contact the Chaplaincy by app to request support.
- One to one meetings are offered to those who wish to access pastoral support.

### **If someone a prisoner cares about dies ...**

- If someone close to a prisoner dies, the Chaplaincy is available to offer support.
- If the prisoner hopes to attend the funeral, the Chaplain will help them to find the necessary information to fill in the application to attend.
- If it is not possible to attend, the Chaplain is also available to support people at the time of the funeral with the offer of prayers if appropriate.

### **Religious worship**

- A multi-faith room is available.
- A wide variety of holy books and resources from the major faith traditions are available.
- Prisoners will be supported to practise their faith and mark major religious festivals if it is their wish.



- The kitchen caters for the dietary needs of people of faith. There is provision for Muslim prisoners to observe the requirements of Ramadan.

### **Christian Sunday worship**

- Christian Sunday worship takes place each week, from a variety of Christian traditions.
- Three services take place each Sunday afternoon for different populations within the prison community:

14.00      Vulnerable prisoners  
14.30      Female prisoners  
15.00      Main male population

- Holy Communion according to the rites of the Church of England is offered on alternate Sunday afternoons. If it is someone's religious practice to receive Holy Communion weekly, and/or for major Christian festivals, this can be arranged in consultation with the Chaplain.
- There is a monthly Mass for Roman Catholic prisoners.

### **Chaplaincy Guitar Group**

- There is also the opportunity for the main male population to be involved with a small, relaxed music group with others to play guitars/percussion/sing.

### **Bible Study**

- There is an opportunity to study the Bible after an evening meal once a week.

### **Northern Lights Choir**

- There is the opportunity to join a choir group organised through Chaplaincy. A small number of members of an outside choir join us to sing a mixture of music - mostly not religious. The choir also sings at the annual Christmas carol service.

**Guernsey Caring for Ex-Offenders** is a Christian charity with links to the Chaplaincy and supports people in a variety of ways in prison and after release.





## The Chaplaincy Team

- The team consists of the Chaplain, who is supported by two volunteer chaplains, one who runs a local independent Mission Church, and one whose work is in running Guernsey Caring for Ex- Offenders.
- They come to the prison on a regular basis to visit prisoners and belong to the Prison Fellowship, a small group which runs bi-weekly Sunday service attended by the Chaplain.
- One runs a weekly Bible study group; and the other, the fortnightly Chaplaincy Guitar Group noted above.

The local Roman Catholic priest is available to support Roman Catholic prisoners and there is a monthly Mass.

## § Diversity

The outgoing Chaplain, the Reverend Penny Graysmith, has also been the Diversity Team Lead.

- Guernsey Prison Service is fully committed to providing an environment that is fully inclusive, fair and open toward all individuals. The principles of equality, diversity, and respect for an individual's differences are valued.
- As an organisation, Guernsey Prison recognises that diversity is the responsibility of everyone, including managers, staff, members of the Independent Monitoring Panel, visitors, and prisoners.

### The role of the Diversity Team:

- The overall monitoring of all diversity strands within Guernsey Prison is the responsibility of the Diversity Team.
- The Diversity Team meets on a regular basis to review and monitor diversity policies and procedures throughout the prison and to investigate alleged diversity incidents. It is responsible for all diversity training.
- The previous Chaplain developed and taught a Diversity Course of eight sessions delivered to prisoners in the Education Department on a regular basis.

//

**More information about Guernsey Prison can be found at <https://gov.gg/prison>**

